



INDUSTRIAL & COMMERCIAL TRANSPORTATION SERIES BRIEF

NEXT GENERATION DEUTSCH 2/3 POSITION DT SNAP-CAP CONNECTOR FOR INLINE APPLICATIONS

New product extension to DT connectors – rear wire seal snap-cap cover

For over thirty years, TE Connectivity has been helping customers to make secure and reliable connections, within the harsh environments experienced by industrial and commercial transportation.

Commercial vehicle productivity is essential and as trends push towards 24/7/365 autonomous availability, the importance of robust electrical connections becomes ever more paramount. Experiencing unplanned downtime from system failure can be difficult and expensive to diagnose and remedy, not to mention the lost productivity related costs when entire operations cease due to electrical connections. To minimize these occurrences, insist on TE DEUTSCH connectors.

DEUTSCH's DT 2/3 Position Connector for Inline Applications

In order to protect vital electrical connections from the harsh conditions in which they have to perform, many vehicle and equipment manufacturers choose the extremely popular and highly reliable DEUTSCH DT 2/3 position sealed connectors from TE. This DT connector series is used for wire-to-wire, on integrated header modules with internal printed circuit boards and various devices (sensors, actuators, etc.) for low-power transmission and signal level communication circuits.

Constructed from engineering grade resin materials compliant with UL94 V0 flammability ratings, this DT snap-cap series uses the same long established ruggedized circular DEUTSCH pin & socket common contact system parts that function well in tough working conditions of high vibration, and extreme temperature environments.

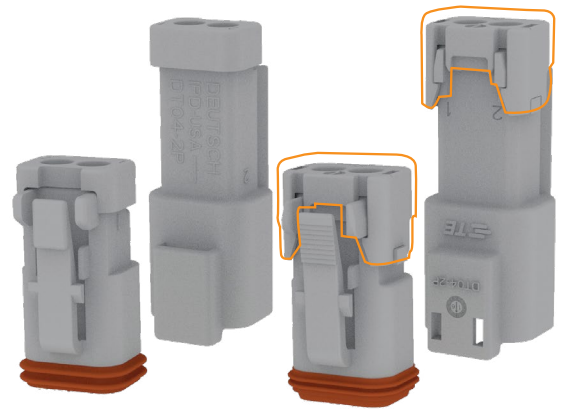


NEW DT SNAP-CAP DESIGN

Following on from the success of our DT range, we are delighted to introduce the new wire-to-wire snap-cap design for the DEUTSCH connector series – a new option from a trusted and highly experienced supplier. This means that the DT 2/3 series now includes three versions – the existing standard version, the welded seal cover and our innovative new snap-cap design.

The new DT snap-cap plugs include an enhanced front seal retention and secondary wedge-lock design, which is known as the -PO12 style modification. At the same time, the interface plug front seal is fully serviceable in the field, if a replacement is needed – a key advantage over non-replaceable molded-in designs.

The new versions are validated to all of the historical DT connector requirements, offering interface compatibility with all previous mating connectors and interfaces, while making a seamless transition from legacy design to future designs.



DT WELD CAP

DT SNAP CAP

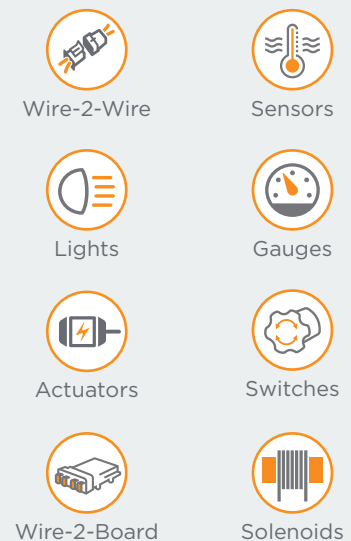
Target Markets



Optimized Snap-Cap Structure Design

- Two new snap-in place wire seal cover options, including short and long/extended cap variants
- Covers offer the same seal protection as the welded-in place caps, with additional wire routing features to enhance wire seal side-loading support
- Snap-caps are assembled with high-strength, redundant latch structure
- Standard short snap-cap provides individual wire routing support features
- Longer extended snap-caps are meant to be used with heat-shrink tubing for extra protection of wiring from heavy spray or splash conditions
- Backshells or shrink-tube adapters are recommended for high pressure spray applications

Applications



Terminal Options

- DT snap-cap parts use proven DEUTSCH round #16 size pins and sockets
- The terminal rating is 13A continuous at rated maximum temperature of 125 C°
- DEUTSCH contact choices include solid body or stamped & formed terminals, in a variety of plated contact finishes to address all of your termination requirements
- Terminal applicators are available for service level hand application and applicator dies are available for high volume requirements

Snap-Cap and Weld-Caps

- Performance – specifications are equivalent
- Raw materials – materials and sub-components are the same
- Markings – snap-cap versions utilize improved part number and date code marking technology
- Backwards capability – both weld-caps and snap-caps are interchangeable and backwards compatible with all versions

Availability

- Available in standard colors – black and gray for normal (N) thickness SAE AWG or thin (E) TXL ISO wire sizes
- Accessories and supporting components, such as mounting clips and wedge-locks, remain in use and are unchanged

STANDARDS AND SPECIFICATIONS

Product specifications:

108-151009

Application specifications:

114-151009, 114-151000

PRODUCT SPECIFICATIONS

Contact resistance low level

Max. 7.5 mΩ

Contact resistance mV drop

100 mV max at 13A

Insulation resistance

1000 MΩ

Contact size

#16

Temperature range

-55 C° to 125 C°

Protection level

IP67, IP68



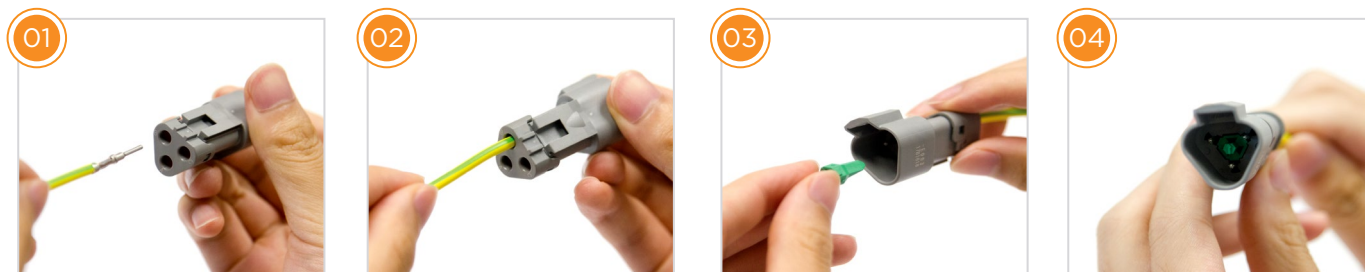
EASY TO USE

The DEUTSCH DT 2/3 position connectors make for easier wiring. From improved contact insertion and removal, to uncomplicated mating and unmating, ease of use is ensured to enable faster and efficient connections.

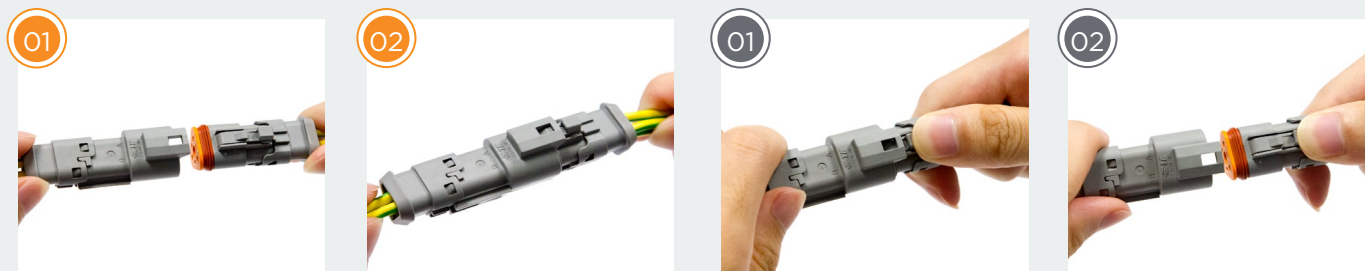
For complete details on contact insertion, mating, unmating and contact removal sequences and required tooling, please refer to the application specification # 114-151009.



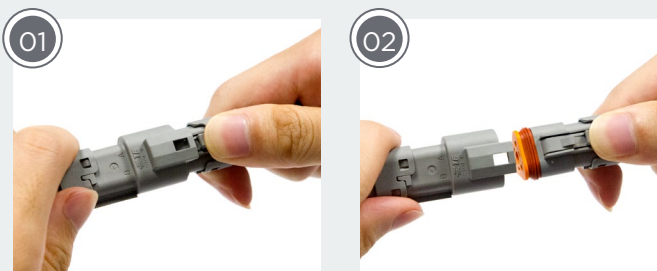
CONTACT INSERTION



MATING



UNMATING



CONTACT REMOVAL



32 NEW DEUTSCH DT SNAP-CAP CONNECTORS AVAILABLE

Here are the part numbers for the DT 2 Position Connector for Inline Applications.

New DT Snap-Cap P/N	TE Alias P/N	XREF to DT Weld Cap P/N	Seal Type	Colour
DT04-2P-TE31	1-2303812-1	DT04-2P-CE01	E-seal	Gray
DT04-2P-TE32	1-2303812-4	DT04-2P-CE03	E-seal	Black
DT04-2P-TN31	1-2303812-2	DT04-2P-E003	N-seal	Gray
		DT04-2P-EP04		
DT04-2P-TN32	1-2303812-3	DT04-2P-E005	N-seal	Black
DT04-2P-TE81	2-2303812-1	DT04-2P-CE04	E-seal	Gray
DT04-2P-TN81	2-2303812-2	DT04-2P-E008	N-seal	Gray
DT04-2P-TE82	2-2303812-4	DT04-2P-CE09	E-seal	Black
DT04-2P-TN82	2-2303812-3	DT04-2P-EE01	N-seal	Black
DT06-2S-TE31	1-2303815-1	DT06-2S-CE01	N-seal	Gray
DT06-2S-TN31	1-2303815-2	DT06-2S-E003	N-seal	Gray
		DT06-2S-EP04		
DT06-2S-TN32	1-2303815-3	DT06-2S-E005	N-seal	Black
		DT06-2S-EP06		
DT06-2S-TE32	1-2303815-4	DT06-2S-CE03	E-seal	Black
		DT06-2S-CE05		
DT06-2S-TE81	2-2303815-1	DT06-2S-CE04	E-seal	Gray
DT06-2S-TN81	2-2303815-2	DT06-2S-E008	N-seal	Gray
DT06-2S-TN82	2-2303815-3	DT06-2S-EP11	N-seal	Black
DT06-2S-TE82	2-2303815-4	DT06-2S-CE13	E-seal	Black

- ** 1. All above listed DT Weld Cap parts can be replaced by fit and function equivalent DT Snap-Cap parts as listed in this cross reference (XREF) list
 2. TE Alias P/Ns are traditional 1-7-1 format TE P/Ns and can be utilized to order DT Snap-Cap parts as listed
 3. E-seal means reduced wire seal diameter and N-seal means normal wire seal

32 NEW DEUTSCH DT SNAP-CAP CONNECTORS AVAILABLE (CONTINUED)

Here are the part numbers for the DT 3 Position Connector for Inline Applications.

New DT Snap-Cap P/N	TE Alias P/N	XREF to DT Weld Cap P/N	Seal Type	Colour
DT04-3P-TE31	1-2303813-1	DT04-3P-CE01	E-seal	Gray
DT04-3P-TN31	1-2303813-2	DT04-3P-E003	N-seal	Gray
		DT04-3P-EP04		
DT04-3P-TN32	1-2303813-3	DT04-3P-E005	N-seal	Black
DT04-3P-TE32	1-2303813-4	DT04-3P-CE03	E-seal	Black
DT04-3P-TE81	2-2303813-1	DT04-3P-CE04	E-seal	Gray
DT04-3P-TN81	2-2303813-2	DT04-3P-E008	N-seal	Gray
DT04-3P-TN82	2-2303813-3	DT04-3P-EE01	N-seal	Black
DT04-3P-TE82	2-2303813-4	DT04-3P-CE09	E-seal	Black
DT06-3S-TE31	1-2303816-1	DT06-3S-CE01	E-seal	Grey
DT06-3S-TN31	1-2303816-2	DT06-3S-E003	N-seal	Gray
		DT06-3S-EP04		
DT06-3S-TN32	1-2303816-3	DT06-3S-E005	N-seal	Black
		DT06-3S-EP06		
DT06-3S-TE32	1-2303816-4	DT06-3S-CE05	E-seal	Black
DT06-3S-TE81	2-2303816-1	DT06-3S-CE04	E-seal	Gray
DT06-3S-TN81	2-2303816-2	DT06-3S-E008	N-seal	Gray
DT06-3S-TN82	2-2303816-3	DT06-3S-EP11	N-seal	Black
DT06-3S-TE82	2-2303816-4	DT06-3S-CE13	E-seal	Black

** 1. All above listed DT Weld Cap parts can be replaced by fit and function equivalent DT Snap-Cap parts as listed in this cross reference (XREF) list
 2. TE Alias P/Ns are traditional 1-7-1 format TE P/Ns and can be utilized to order DT Snap-Cap parts as listed
 3. E-seal means reduced wire seal diameter and N-seal means normal wire seal

te.com/ict

DEUTSCH TE Connectivity, and TE Connectivity (logo) are trademarks. All other logos, products and/or company names referred to herein might be trademarks of their respective owners.

The information given herein, including drawings, illustrations and schematics which are intended for illustration purposes only, is believed to be reliable. However, TE Connectivity makes no warranties as to its accuracy or completeness and disclaims any liability in connection with its use. TE Connectivity's obligations shall only be as set forth in TE Connectivity's Standard Terms and Conditions of Sale for this product and in no case will TE Connectivity be liable for any incidental, indirect or consequential damages arising out of the sale, resale, use or misuse of the product. Users of TE Connectivity products should make their own evaluation to determine the suitability of each such product for the specific application.

© 2019 TE Connectivity Ltd. family of companies All Rights Reserved.

1-1773982-7 08/19 Original

SERIES BRIEF

Contact us

4849 Hempstead Station Drive
 Kettering, OH 45429 USA

Tel: +1 800 522 6752

www.te.com

